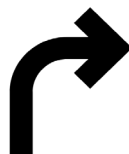




\$ 1,800 / MONTH



Office



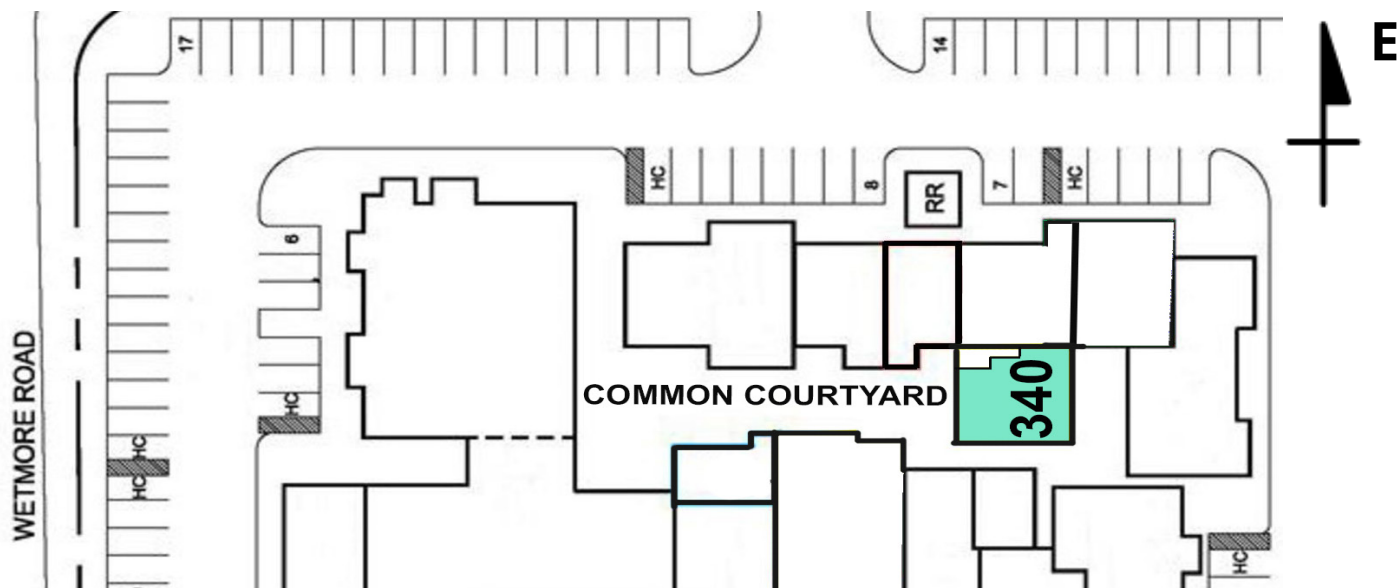
Signalized Corner



Modified Gross



1,000 SF



JON O'SHEA • JON@VASTTUCSON.COM • 520-624-9400

698 E WETMORE ROAD #340



PROPERTY DETAILS

Location: Wetmore Road & First Avenue

Year Built: 1984

Available: 1,000 SF

Zoning: C-1

Parking: Assigned / Open

Signage: Monument / Fascia



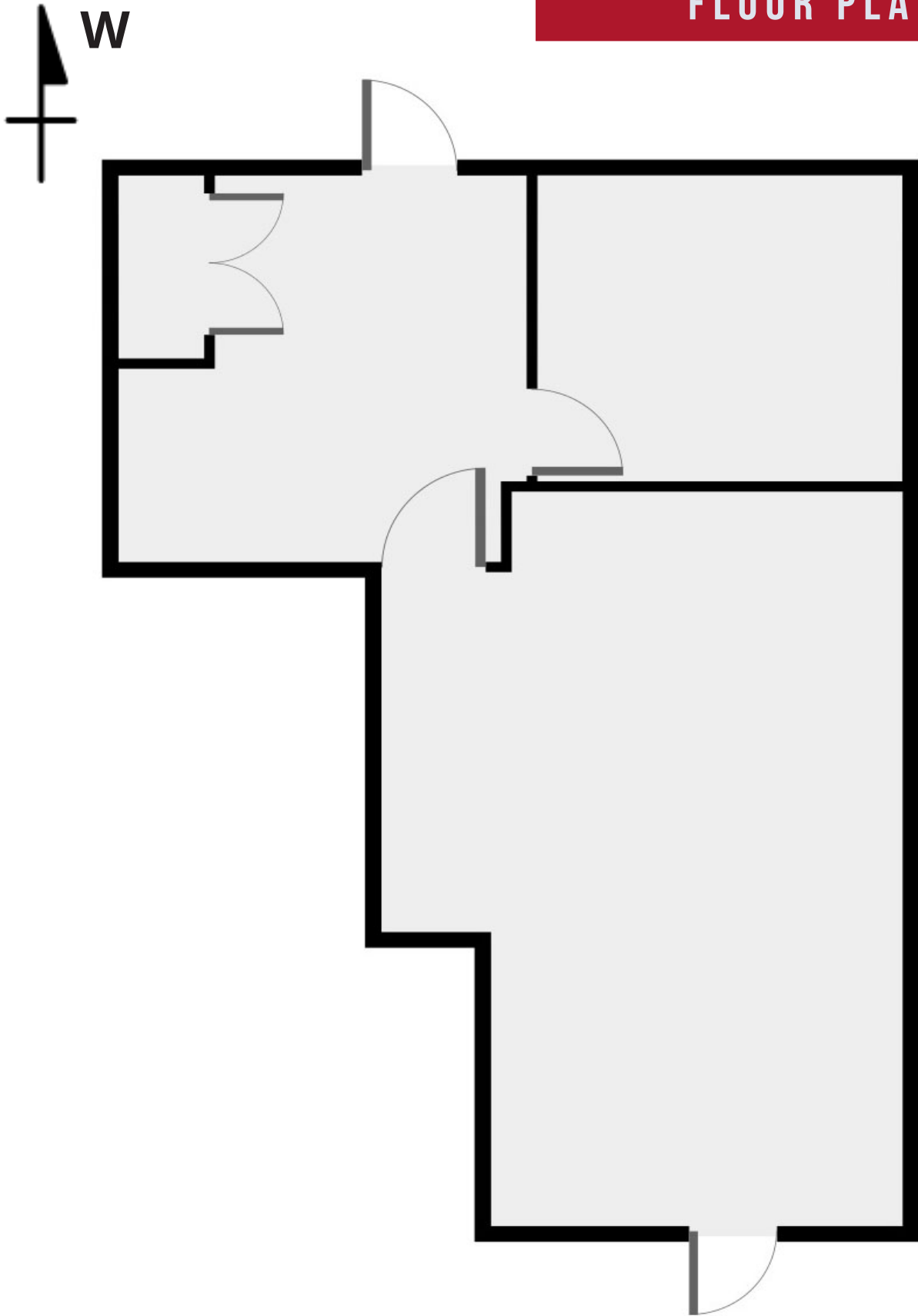
JON O'SHEA

• **JON@VASTTUCSON.COM**

• **520-624-9400**

WWW.NEWOFFICEFORYOU.COM/WETMORE

VAST COMMERCIAL REAL ESTATE SOLUTIONS



JON O'SHEA • JON@VASTTUCSON.COM • 520-624-9400

WWW.NEWOFFICEFORYOU.COM/WETMORE